

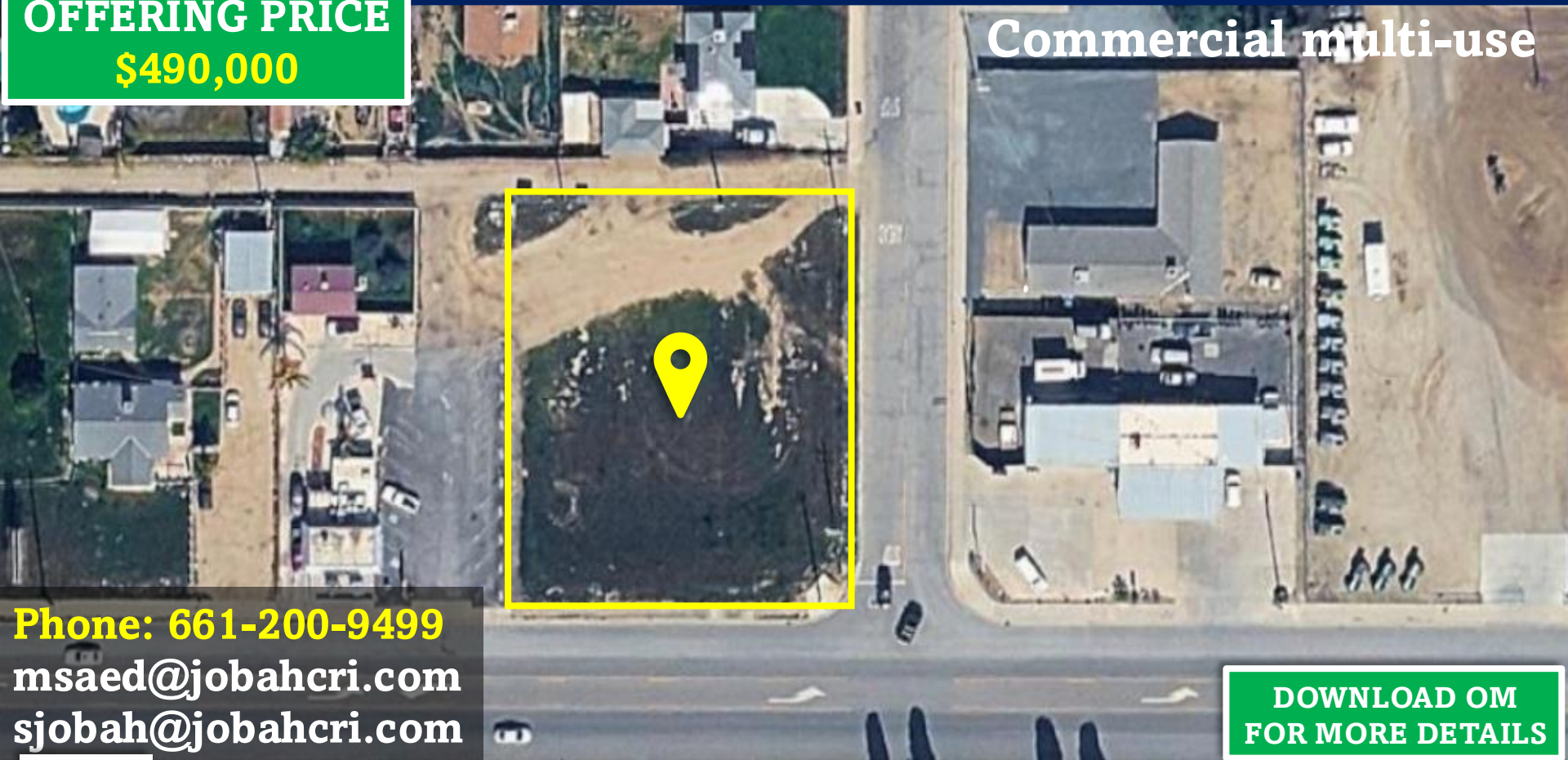
0.55 ACRES COMMERCIAL CORNER PROPERTY FOR SALE



ADDRESS: 1032 PASO ROBLES HWY, WASCO, CA 93280

OFFERING PRICE
\$490,000

Commercial multi-use



Phone: 661-200-9499
msaed@jobahcri.com
sjobah@jobahcri.com

**DOWNLOAD OM
FOR MORE DETAILS**

